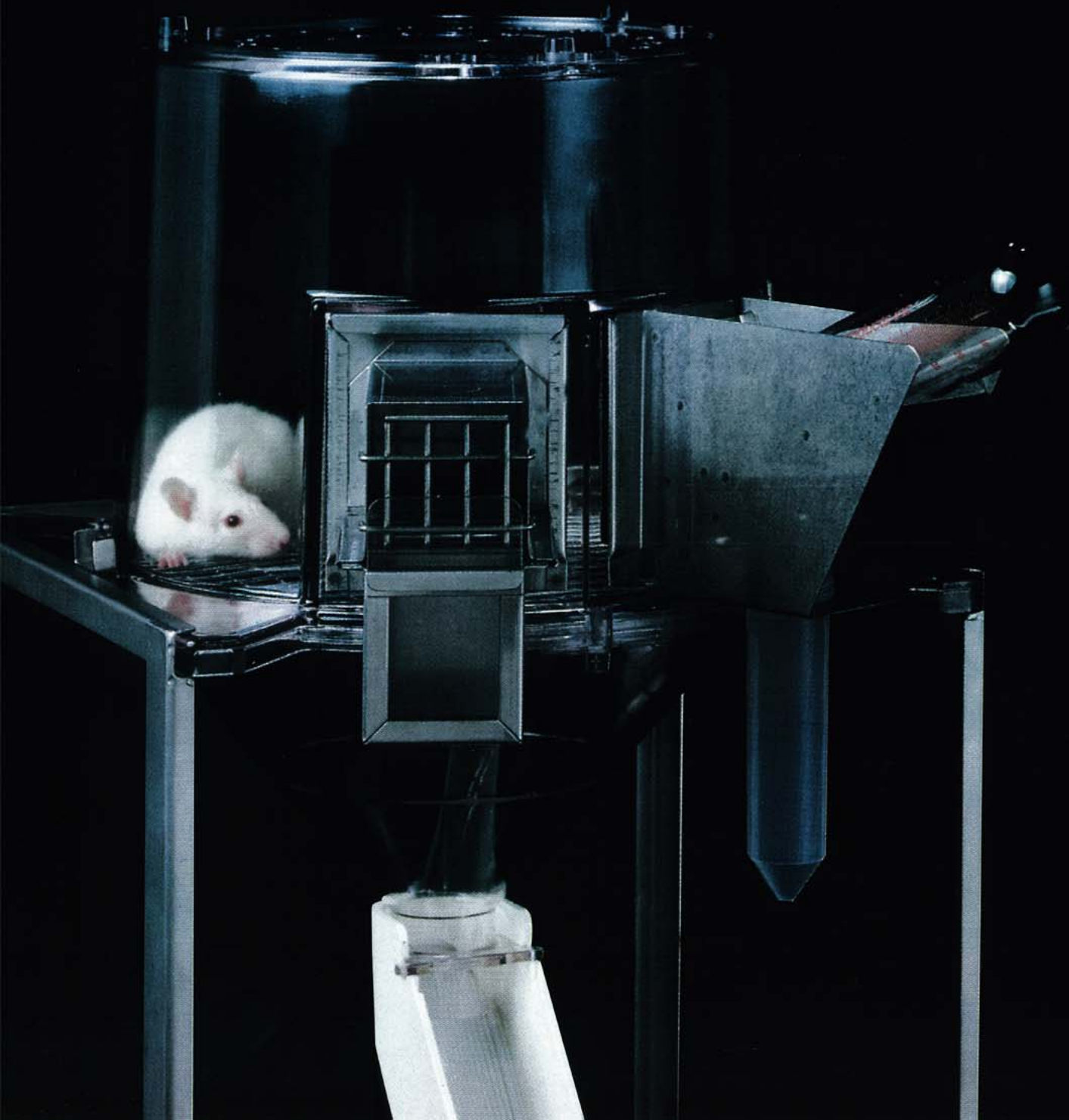


Lab Products revolutionizes metabolic caging:

Now say goodbye to unsatisfactory urine/feces separation and unnecessarily complex cage design



Space-saving stainless steel rack for eight metabolic cages



A space-efficient rack is available—as a separate item or as part of the complete system—that accommodates eight metabolic cages. Each cage is positioned on a removable shelf. Fabricated of heli-arc welded stainless steel with four 5" diameter neoprene casters (two with brakes). Size: 51.6" wide × 20.0" deep × 71.1" high (including casters and outriggers).

Ordering Information

Catalog Number	Description
2100-M	Complete metabolic cage for mouse
2100-R	Complete metabolic cage for rat
2101	Cage body
2102	Cage floor for mouse
2103	Cage floor for rat
2104	Collection funnel
2105	Linear diffuser
2106	Separator housing
2107	Cage stand
2108	Cage lid
2109	Collection vessel
2110S	Mouse single feeder
2110L	Mouse double feeder
2111S	Rat feeder (up to 150 gm.)
2111L	Rat feeder (150 gm. and over)
2112	Water bottle holder
30695	Sipper tube
30006	Rubber stopper
44104	Water bottle
2113	Closure gate
2114	Urine deflector
40618-RO	Stainless steel rack only (holds 8 metabolic cages)
40618-M	8-cage metabolic unit for mice (consists of a stainless steel rack and 8 metabolic cages)
40618-R	8-cage metabolic unit for rats (consists of a stainless steel rack and 8 metabolic cages)

lab products inc

a **BioMedic** company

742 Sussex Avenue, P.O. Box 639
Seaford, Delaware 19973-0639
800-526-0469/302-628-4300
Fax: 302-628-4309
e-mail: lpi@labproductsinc.com
web: <http://www.labproductsinc.com>

Major Credit Cards Accepted

The new Lab Products metabolic unit and its seven design goals

(and how they were achieved)

1. Maximum separation capability
 - unique new design principle yields 99% uncontaminated separation efficiency*
2. Ease of use
 - 15 completely integrated parts
 - simple assembly
 - parts interchangeable from unit to unit even *after* autoclaving
 - easy access to animals without unit disassembly
 - easy access to everything below cage floor
3. Minimal animal stress
 - meets ILAR requirements
 - sample removal without stressing animals
 - access to all elements below cage floor without disturbing animals
4. Versatility
 - unit accommodates various species with simple feeder and floor change
5. Durability
 - structural components of autoclavable polycarbonate and stainless steel
6. Disposability
 - although all components are cleanable, the separator is fabricated of styrene for disposability when toxic or radioactive diets are used
7. Economy in use
 - few parts
 - any 50 ml. centrifuge or tissue culture tubes can be used as collection vessels
 - total parts interchangeability from unit to unit
 - simple, rapid disassembly or reassembly
 - exceptional durability
 - totally: lower parts and labor costs

*This metabolic system does indeed yield remarkable results if, but only if, meticulous attention is paid to both its assembly and operation. Accordingly, we've prepared explicit instructions that will help ensure optimal system functioning. In addition, customers in the U.S. will be contacted by a technical sales representative to provide further consultation as required.

The elements and operation of the Lab Products metabolic cage

Operation

Animal waste is directed by the collection funnel onto the top end of the linear diffuser which allows the solid matter to travel down the top ridges of the 50° incline grid (passing over the urine port) and into the fecal collection vessel at the front of the separator housing. Liquid waste flows between the grooves, down the inclined diffuser, into the urine port and finally into the urine collection vessel. The urine deflector prevents large volumes of urine from splashing over the urine port and contaminating the fecal specimen.

